

Promote a Healthy, Sustainable Watershed!

Inform the public on the major watershed issues – especially those they can help solve through lifestyle changes. The large outdoor displays help people identify and connect with their local watershed and are one of the easiest and most cost-effective ways to educate the public.

Public Outreach Opportunity



Bolsa Chica

Over 30 years experience - Public Approved!

Public education – a great investment in watershed sustainability!

- Easy method to partner with other agencies and NFPs in public outreach
- Cost and time effective • Focuses on a healthy, sustainable watershed
- Proven, non-partisan, solution oriented

Content submitted and reviewed by multiple local and state agencies

Now in 75 prime locations*
throughout the watershed

Riverside County

Rancho Jurupa Park (Riverside County)
Hidden Valley Park Overlooks (2) (Riverside County)
Carlson Dog Park (City of Riverside)
Ryan Bonaminio Park (City of Riverside)
LandUse Learning Center (RCD-Riverside)
Higher Grounds Coffee House (Idyllwild)
Idyllwild Library
Lake Hemet Campground
Lake Perris State Park
Noble Creek Park (Beaumont)
San Geronio Pass Water Agency
Jurupa Mountain Discovery Center
Glen Ivy Hot Springs (Corona)
Corona Library
Hidden Harbor Park (Canyon Lake)
Tom's Farms (Temescal Valley)
Paloma Wash Trail (Menifee)
Norco Horsemen's Association/Corydon Staging Area
Santa Ana River Trail (2) (Eastvale)
UC Riverside
Diamond Valley Lake (MWD)
Caltrans Rest Area (East Bound) (I-10) (Calimesa)
Caltrans Whitewater Rest Area (West Bound) I-10

Orange County

Centennial Park (Santa Ana)
Civic Center (Santa Ana)
Santiago Creek Nature Center (Santa Ana)
Carl Thornton Park (Santa Ana)
Grijalva Park (Orange)
Silverado Canyon Market
Irvine Ranch Outdoor Education Center (BSA)
Santa Ana River Trail at Moon Park (Costa Mesa)
Fairview Park Santa Ana River Overlook (Costa Mesa)
Life Guard HQ Building (Huntington Beach SP)
Huntington Beach State Park (2)
Huntington Beach Pier Area
Shipley Nature Center
Heritage Museum of Orange County (Santa Ana)
Balboa Fun Zone/Ocean Quest (Newport Beach)
Newport Dunes Boat Launch (Newport Beach)
Newport Dunes Beach Area (Newport Beach)
Back Bay Science Center (Newport Beach)
West Marine (Newport Beach)
Newport Aquatic Center
OCC School of Sailing & Seamanship (2)
Environmental Nature Center (Newport Beach)
Buck Gully Reserve (City of Newport Beach)
Bolsa Chica Conservancy (2)
Bolsa Chica CFW
Acacia Park (City of Fullerton)
Irvine Lake Fishing Store
Serrano Water District

San Bernardino County

Momyer Trailhead (USFS) (Forest Falls)
Thurman Flats Picnic Area (USFS) (Yucaipa)
Mary Vagle Nature Center (City of Fontana)
Mill Creek Ranger Station
Lytle Creek Ranger Station
Scotland Store (Lytle Creek)
Hortencias at the Cliff Hanger (Crestline)
Meadow Park (Big Bear)
Big Bear Alpine Zoo (Big Bear)
Boulder Bay Park (Big Bear)
Oaks Restaurant (Angelus Oaks)
Sylvan Park (Redlands)
San Timoteo Nature Sanctuary (Redlands)
Cal State San Bernardino
Wildwood Canyon Park (Yucaipa)
Riley's at Los Rios Ranchos (Oak Glen)
Mom's Country Orchards (Yucaipa)
El Dorado Ranch Park (City of Yucaipa)
Yucaipa Regional Park
Chino Creek Wetlands and Educational Park
Victoria Arbors Park (Rancho Cucamonga)
Environmental Learning Center (CVWD)
Cucamonga-Guasti Regional Park (Ontario)
Amy's Farm (Ontario)
MacIn Open Air Market (Ontario)

Mock-up Only
Actual Size: 36" x 36"

Help educate the public on their watershed

Santa Ana River Watershed

EXPLORATION • CONSERVATION • RESTORATION



Simple ways to help

- The yard care products you apply**
Use pesticides and herbicides that are safe for your pets and children. Read the label carefully and follow the directions. Avoid spraying on windy days.
- Keep your dog's poop**
Pick up your dog's poop and dispose of it properly. Poop can contain bacteria and parasites that can harm people and animals.
- Wash car at a commercial carwash**
Use a carwash that has a separate area for washing your car. This prevents car wash runoff from entering the watershed.
- Maintain your car**
Check for leaks and other issues that could cause oil or other fluids to leak into the watershed.
- Use less water**
Take shorter showers, fix leaks, and use water-saving devices like low-flow toilets and showerheads.
- Keep plastic and trash out of the water**
Properly dispose of plastic and other debris. It can harm wildlife and pollute the water.
- Eliminate water**
Don't pour oil, paint, or other hazardous materials down the drain. These can harm the environment.
- Volunteer: Get the job done!**
Join a local conservation group to help with watershed projects like tree planting and stream cleanup.
- Help stop invasive species**
Be vigilant for non-native plants and animals. Report any sightings to local authorities.

Every Drop Counts

Your water takes an extraordinary journey to get to you — from sources high in the Rockies and the Sierra Nevada, through critical purification processes, to homes and businesses across Southern California. Yet drought and climate change continue to impact our precious water supply, which is why making conservation a way of life is essential. We can all do our part to conserve, from taking shorter showers to switching out lawns for beautiful, water-efficient gardens. This is how we save water.

Protect Yourself from Mosquitoes

Mosquitoes are especially active in summer months. Larvae develop in standing and slow-moving water. It takes as little as five days for eggs to develop into biting adults. Wear light-colored long-sleeve shirts/pants. Avoid areas with heavy vegetation and remember the peak biting times are dusk and dawn. Repellents with DEET, Picaridin, Oil of Lemon Eucalyptus, and IR3535 are proven to be most effective against mosquitoes.

One Water One Watershed

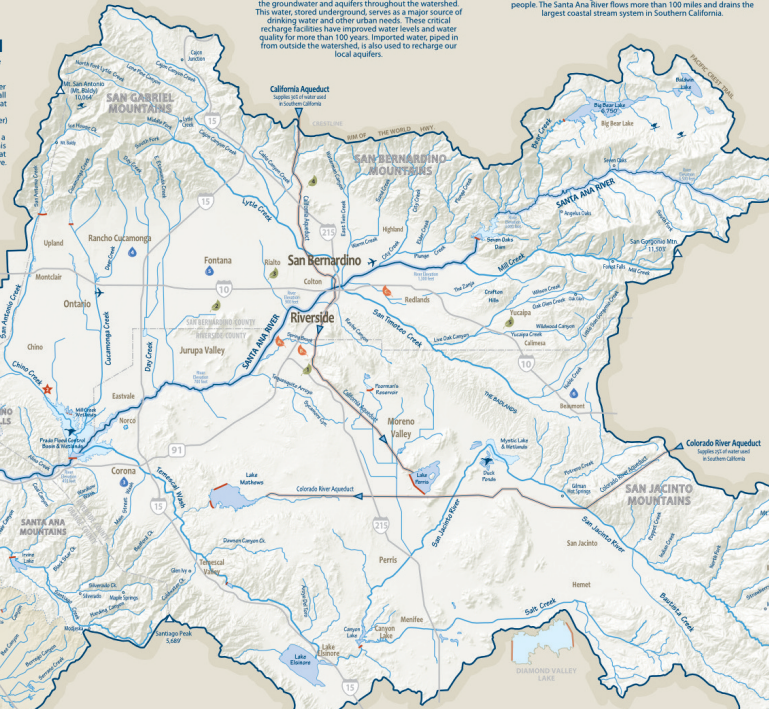
The Santa Ana River Watershed is home to the concept and plan called "One Water One Watershed" or "OWOW." OWOW reflects a comprehensive view of the watershed and water resources. It is an integral view encompassing all agencies and organizations in the watershed that looks at all types of water (local surface and groundwater, imported, storm water, wastewater) as components of a single water resource. Inevitably linked to land use and habitat, and a part of the watershed's natural hydrology. By this view, new water solutions can be developed that are integrated, multi-beneficial and collaborative.

Groundwater Recharge

The Santa Ana River and its tributaries provide winter stream flow which are diverted to percolation basins to recharge the groundwater and aquifers throughout the watershed. This water, stored underground, serves as a major source of drinking water and other urban needs. These critical recharge facilities have improved water levels and water quality for more than 100 years. Imported water, piped in from outside the watershed, is also used to recharge our local aquifers.

What is a Watershed?

A watershed is an area of land on which rain and snow falls and ultimately collects and drains into a single larger body of water, such as a river, lake, or ocean. Watersheds come in all sizes and are separated by ridges and hills that are called drainage divides. These drainage basins consist of all surface water including rivers, lakes, streams, reservoirs and wetlands as well as all the underlying groundwater. Watersheds supply us with water for drinking, agriculture, industry, power generation, recreation, and habitat for fish and wildlife. The Santa Ana River Watershed drains a 2,550 square-mile area and includes portions of Orange, Riverside, San Bernardino, and Los Angeles counties. It is home to more than 6 million people. The Santa Ana River flows more than 100 miles and drains the largest coastal stream system in Southern California.



Explore the Watershed

- San Juan Capistrano Bay & Wetlands**
San Juan Capistrano Bay & Wetlands is a 1,000-acre wetland area in San Juan Capistrano. It is home to a variety of birds and other wildlife. For more information, visit www.sanjuanbay.org.
- Orange County San Gabriel Mountains**
The San Gabriel Mountains are a range of mountains in Orange County. They are home to a variety of plants and animals. For more information, visit www.san gabrielmountains.org.
- San Bernardino Mountains**
The San Bernardino Mountains are a range of mountains in San Bernardino County. They are home to a variety of plants and animals. For more information, visit www.sanbernardinountains.org.
- San Jacinto Mountains**
The San Jacinto Mountains are a range of mountains in San Diego County. They are home to a variety of plants and animals. For more information, visit www.sanjacintountains.org.

Water Agencies

- Orange County San Gabriel Mountains**
Orange County San Gabriel Mountains Water Conservation District
15000 Main Street, Suite 100
Orange, CA 92668
Tel: 714.838.0729
- San Bernardino Mountains**
San Bernardino Mountains Water Conservation District
15000 Main Street, Suite 100
Orange, CA 92668
Tel: 714.838.0729
- San Jacinto Mountains**
San Jacinto Mountains Water Conservation District
15000 Main Street, Suite 100
Orange, CA 92668
Tel: 714.838.0729

Environment & Restoration

- Lead the Learning Center Watershed**
Lead the Learning Center Watershed is a program that provides educational resources for schools and community groups. For more information, visit www.leadthelearningcenter.org.
- San Juan Capistrano Bay & Wetlands**
San Juan Capistrano Bay & Wetlands is a 1,000-acre wetland area in San Juan Capistrano. It is home to a variety of birds and other wildlife. For more information, visit www.sanjuanbay.org.
- Orange County San Gabriel Mountains**
Orange County San Gabriel Mountains is a range of mountains in Orange County. It is home to a variety of plants and animals. For more information, visit www.san gabrielmountains.org.

Sustainable Communities

- University of California, Riverside**
University of California, Riverside is a public research university in Riverside, California. For more information, visit www.ucr.edu.
- San Bernardino Valley Water Agency**
San Bernardino Valley Water Agency is a public utility agency in San Bernardino County. For more information, visit www.sanbernardinowater.com.
- City of Orange**
City of Orange is a city in Orange County, California. For more information, visit www.cityoforange.com.
- City of Fullerton**
City of Fullerton is a city in Orange County, California. For more information, visit www.cityoffullerton.com.
- City of San Diego**
City of San Diego is a city in San Diego County, California. For more information, visit www.sandiego.gov.
- City of Escondido**
City of Escondido is a city in San Diego County, California. For more information, visit www.cityofescondido.com.

Water Recycling

Water recycling reclaims water from a variety of sources and then treats and reuses it for beneficial purposes such as agriculture, seawater intrusion or groundwater replenishment. Water recycling provides an alternative to existing water supplies and enhances water sustainability. Groundwater replenishment systems take treated wastewater from sanitation districts that would otherwise be sent to the Pacific Ocean and purify and recycle it for beneficial reuse and to offset imported water supplies. This produces millions of gallons a day of purified water for some residents of the Santa Ana Watershed.

Wastewater Management

Sanitary systems that collect and treat wastewater are essential to the health of our watershed. These systems protect public health, the environment, and wildlife found in creeks and rivers. More and more wastewater is now being recycled and turned into a valuable water resource.

- Don't flush unused medications — instead find a collector site or take back event.
- Avoid sewer backups — keep fats, oils and grease out of the kitchen drain.
- "Flushable wipes" don't break down like toilet paper — only pee, poop and paper down the toilet!

Pollution Prevention

When water from rain and irrigation washes over yards, driveways and streets, it collects fertilizers, pesticides, oil, pet waste and other pollutants. This water, called runoff, can be harmful to human health and wildlife as it flows untreated into storm drains and ultimately the Pacific Ocean. Although it may seem small, the pollution from individuals accumulates and can have a large impact on the health of our watershed. Help protect our water resources by preventing pollution at its source:

- Properly dispose of trash, litter and recyclables.
- Scoop pet waste, bag it, and put it in the garbage.
- Follow package instructions for pesticides and fertilizers to avoid overuse.
- Maintain your vehicle and have oil leaks fixed.
- Check your irrigation system for leaks and redesign sprinkler heads.

NOTICE!
This display is owned by Bri Communications, which has the right to remove it at any time. Please do not mark or post anything on it. Bri Communications and the business whose this display is located assume no liability for any removal from use of this display.
Copyright 2022 - Bricomm.com

Santa Ana Watershed Project Authority
951-844-3228 • sawa.org/office

Jurupa
COMMUNITY SERVICES DISTRICT
Proudly Serving Jurupa Valley & Eastvale
951-845-7424 • www.jurupa.com

CITY OF SANTA ANA
Water Resources: 714-841-3330

Be Informed. Be Involved.
bewaterwise.com • mw@bwaterwise.com

STORMWATER PROGRAM
Orange County Stormwater Program
h2oc.org

Help Keep Our Watershed Clean

OC SAN AND OCWD - Recycling Water in OC
ocwd.org/gwr • recyclingwaterinoc.com

San Bernardino Valley Water Conservation District
Helping Nature Store Our Water
Over 100 years • www.sbvwd.org

Bite Mosquito-Free WEAR REPELLENT!
Southern Region Vector Control Districts
southwest@vectorcontrol.org • vectorcontrol.org

Caltrans Stormwater Program
CleanWater.CA.gov

75 locations • 23 months • 1,050,000 viewers*

(* estimated - based on an average of 20 viewers per display - per day)

\$8,200

• 3" by 3" formatted ad space (11 spaces maximum) • Installed 2025

Listing and locator: \$1,960

Cost Effectiveness (main sponsors)

• Cost per month \$357 • Cost per viewer: .8 penny • CPM: \$8.2

Bri Communications • Paul Sherwin • 206-378-1055 • paul@bricomm.com